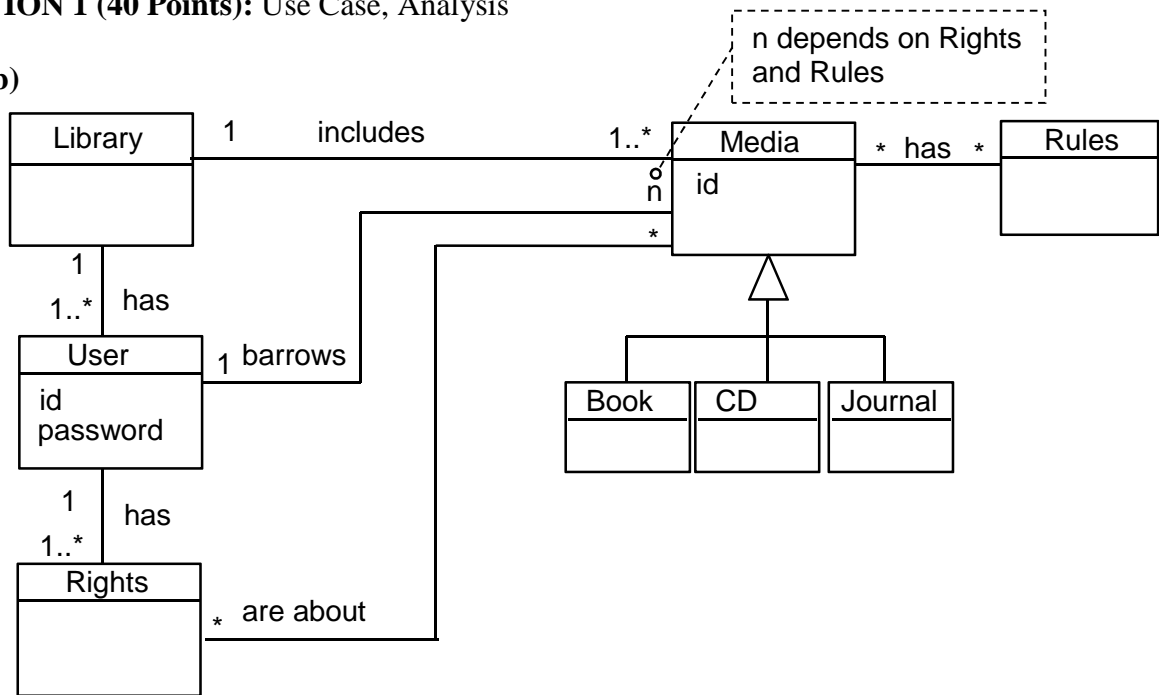




Object Oriented Modeling and Design Midterm Exam

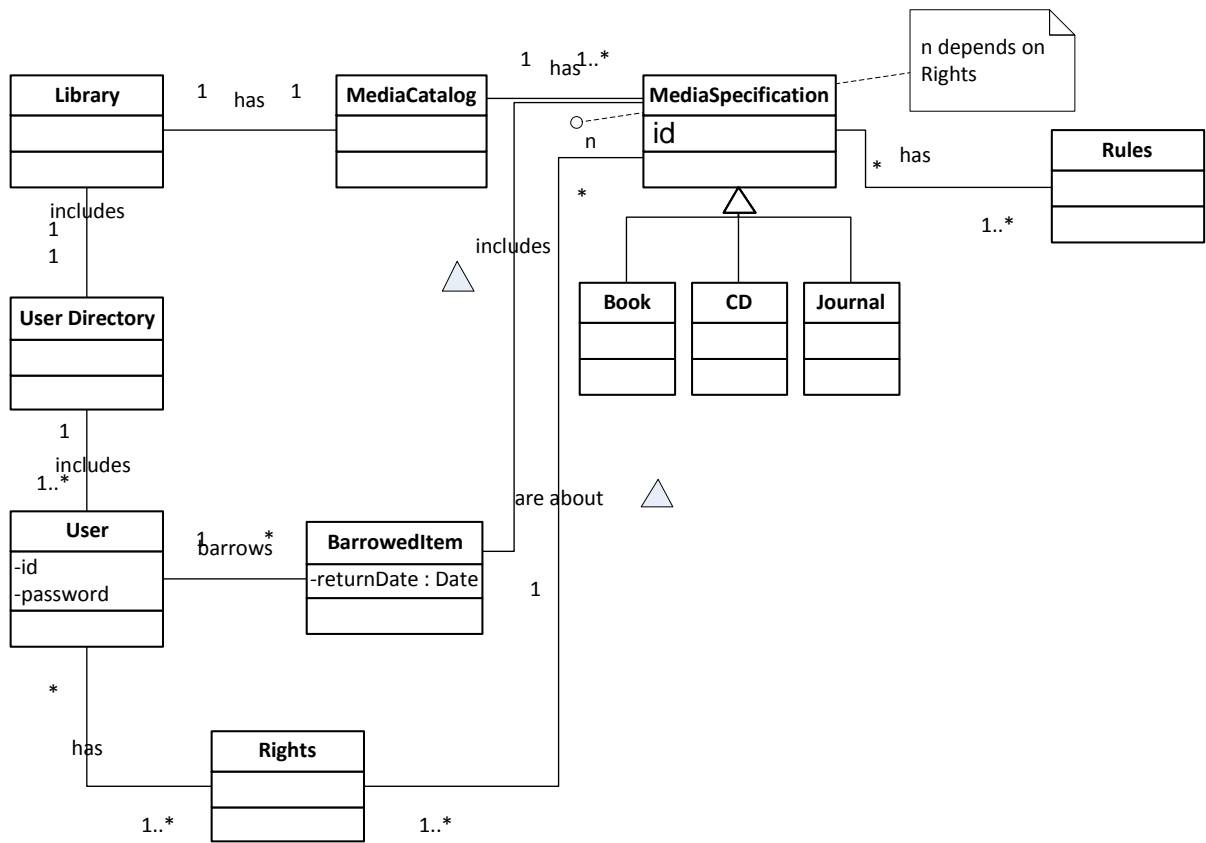
QUESTION 1 (40 Points): Use Case, Analysis

b)



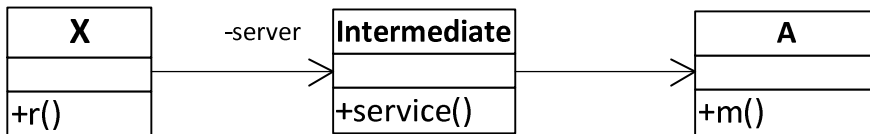
This is a simple solution but not complete.

A more detailed and complete domain model is given on the next page.



QUESTION 2:

a.

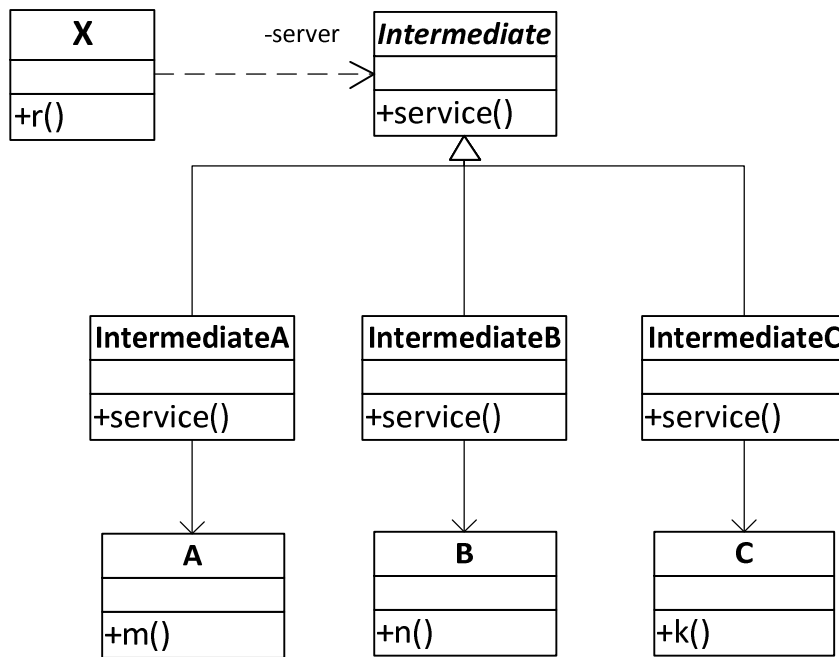


Principles and patterns:

Main pattern is Indirection. Supporting pattern is pure fabrication

b. Polymorphism is not necessary. Class X is always connected to the same Intermediate class. If class A is replaced by class B, class X will again connected to Intermediate class. We don't need to perform a selection in runtime.

c.



Patterns: Indirection, pure fabrication, polymorphism, design to interface

QUESTION 3:

Please see the lecture notes.