

ER Diagrams - Practice

Res. Asst. Sanem Sariel
sariel@itu.edu.tr

Slides and codes (p6) are available in the Ninova System.

3/20/2007

DBMS 2007, Sanem Sariel

1

Main Steps in the Development of the Data Model

- Identify initial entitites
- Identify direct relationships between the entitites
- Construct an initial diagram
- Identify additional characteristics
- Rationalize and validate the model

3/20/2007

DBMS 2007, Sanem Sariel

2

A Sample Database Design

- Business System
 - Data Modelling
 - Database Design

3/20/2007

DBMS 2007, Sanem Sariel

3

General Information

- Customers place orders for the products they would like to purchase
- Sales representatives serve the customers to help in placing the orders
- Warehouse stores the products
- For each order a receipt is given to the customer

3/20/2007

DBMS 2007, Sanem Sariel

4

Initial Entities

- Customers place orders for the products they would like to purchase
- Sales representatives serve the customers to help in placing the orders
- Warehouse stores the products
- For each order, a receipt is given to the customer

3/20/2007

DBMS 2007, Sanem Sariel

5

Descriptive Information

- Each product is defined with its attributes such as: barcode, name, type, cost, etc.
- Each customer has: customer_id, name, address, phone, credit_status, etc.
- Each sales representative has: employer_id, name, sales_score, salary, etc.

3/20/2007

DBMS 2007, Sanem Sariel

6

Relationships

- Each sales representative may serve more than one user
- Each may be served by more than one sales representative
- Customers may place more than one order each containing more than one product
- An order is placed by only one customer
- A receipt is assigned to an order
- Warehouse store many products

3/20/2007

DBMS 2007, Sanem Sariel

7

Entities

- Regular Entities: Customer, Sales Representative, Warehouse, Product
- Conceptual entities: Order, Receipt

Order is a weak entity
Receipt is a weak entity

An entity is:

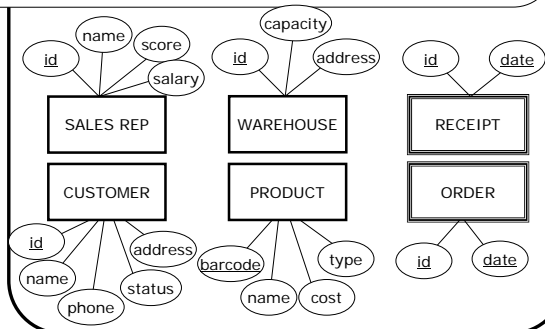
- a thing about which the system holds information
- A type of thing with many particular instances
- An owner of a set of attributes

3/20/2007

DBMS 2007, Sanem Sariel

8

Entities and Attributes



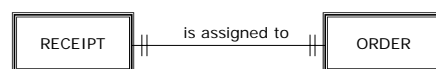
3/20/2007

DBMS 2007, Sanem Sariel

9

1-to-1 Relationship

- Between the order and the receipt



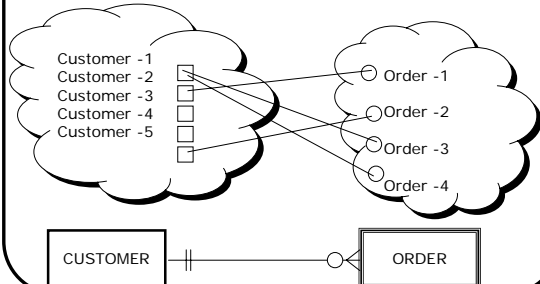
3/20/2007

DBMS 2007, Sanem Sariel

10

1-to-many Relationship

- Between the customer and the order



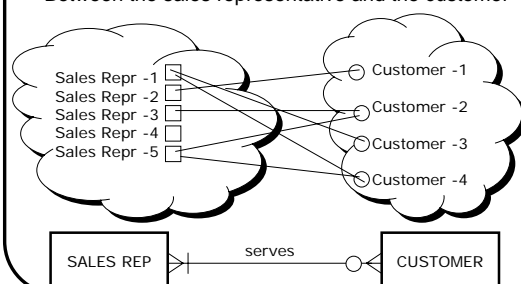
3/20/2007

DBMS 2007, Sanem Sariel

11

Many-to-Many Relationship

- Between the sales representative and the customer

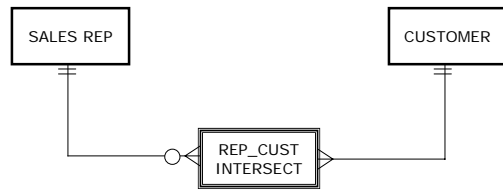


3/20/2007

DBMS 2007, Sanem Sariel

12

Intersection Entities for Many-to-Many Relations

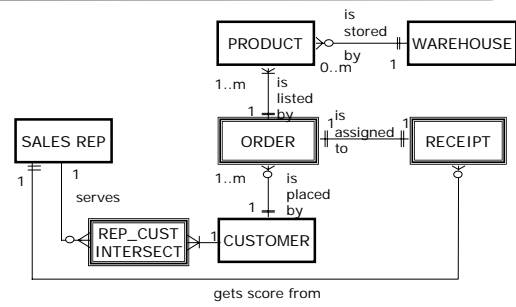


3/20/2007

DBMS 2007, Sanem Sariel

13

ER Diagram of the System



3/20/2007

DBMS 2007, Sanem Sariel

14