

First Texas Instruments Code Composer Studio IDE is downloaded. The installer can be downloaded from the link http://processors.wiki.ti.com/index.php/Download_CCS . From the “Code Composer Studio Version 6 Downloads” section on the page, download the installer with the latest release (The latest version is 6.1.1. during preparation of this document). You can either select web installers or offline installers. Texas Instruments will ask you to login. You can easily setup a new account or login with your existing account. Then you will be asked to fill in an online form and select the Education from the checklist and certify the form inputs and submit the form. Then you will be taken to the download page and you can download the installer.

After downloading , the compressed installer is extracted. Then ccs_setup_XXX.exe is run. Warnings about the antivirus software running are skipped by clicking on yes. License term agreements are accepted. Then the installation location is selected (c:\ti as default). Then on the Processor Support window, MSP430 Ultra Low Power MCUs is selected as shown in the Fig. 1.

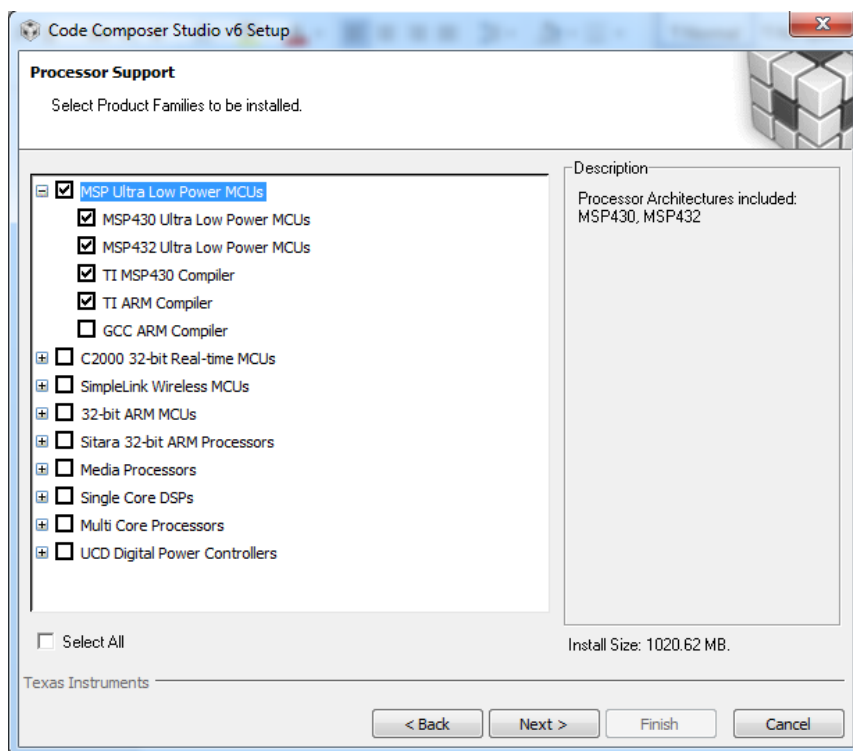


Figure 1: Processor Support window

When click on the “Next >”, “Select Debug Probes” window will appear. Leave the default debug probes and click on the “Next >” as shown in Fig. 2.

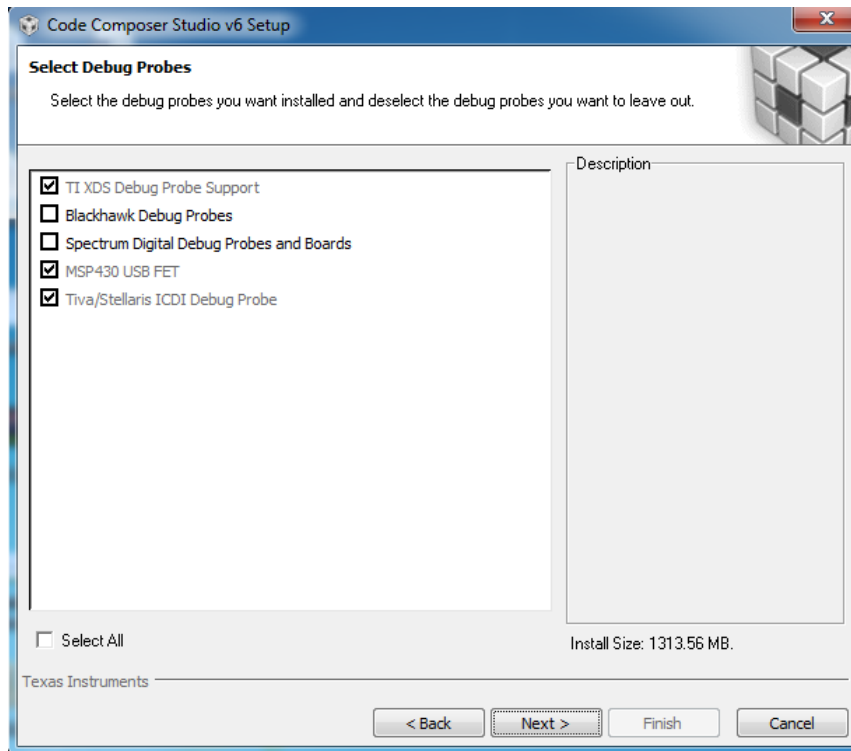


Figure 2: Debug Probes Selection window

The “App Center” window comes up after clicking on next. In the App Center window select all of the options as shown in Fig. 3 and click Finish. After clicking “Finish”, Windows may ask you to allow Code Composer Studio through firewall. Accept the access windows.



Figure 3: App Center window

When you run the Code Composer Studio for the first time, Code Composer Studio asks you to download and install the add ons.

Graphical user interface of the Code Composer Studio is shown in Fig. 4, which is simply an Eclipse IDE that is customized for TI products.

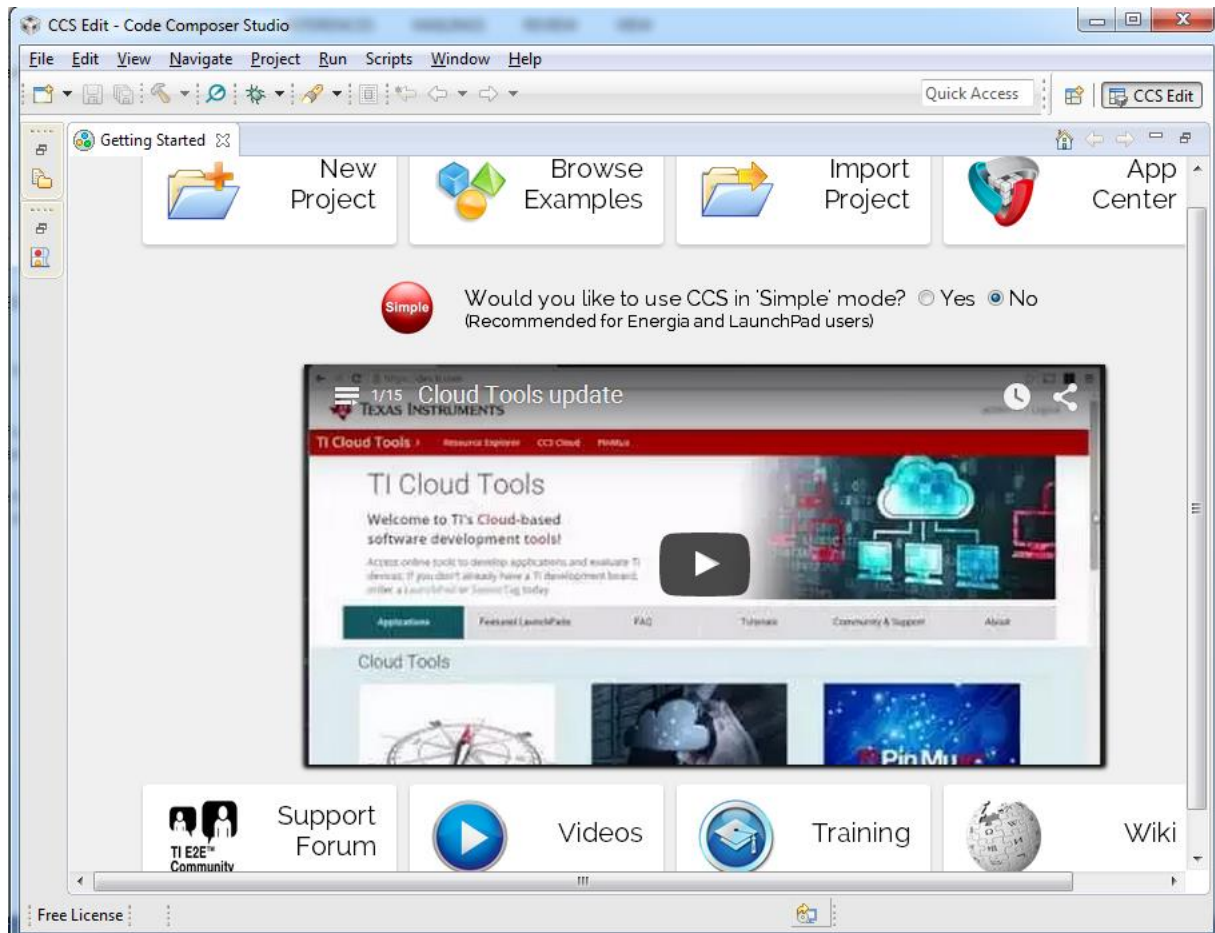


Figure 4: Code Composer Studio GUI